



Dear Families

What an exciting week it has been in school. Our children thoroughly enjoyed their Christmas lunch, and it was a wonderful opportunity for everyone to come together and share in the festivities.

We would also like to thank all families who were able to attend the Christmas Market Stall event. Our children worked incredibly hard to produce the items that were sold and they were very proud of their achievements. All funds raised will go towards new resources for playtime equipment which will benefit all pupils.

We enjoyed a lovely service at St Augustine's Church this week. Thank you to Reverend Jim for welcoming us so warmly and hosting such a special event for our school community.

Following on from events from this week, we were delighted to welcome a group of visitors on Wednesday, including Apple professionals, who came to learn from our pupils and see the fantastic learning taking place across the school supported by digital technology. Our children represented the school brilliantly and we are very proud of them.

Next week marks our Christmas performances. We do hope you are able to join us; timings can be found in the Christmas flyer. Class teachers will be letting children know what they should wear for their performances. As a reminder, on Friday 19th it will be Christmas jumper day or own clothes.

Yours sincerely,
Mrs Ferla and the PWP Team





Upcoming Events



Monday	Tuesday	Wednesday	Thursday	Friday
15th EYFS Nativity 9.15 - Nursery & Lime 2.15pm - Nursery & Lime	16th Year 1 & 2 Christmas concert	17th Years 3 & 4 Christmas concert	18th Years 5 & 6 Christmas concert	19th Last day of term - Christmas Jumper Day or own clothes.



Elsie hanging out with Year 6

ATTENDANCE

Current Attendance- 94.6%

Nursery AM - 94.8%	Nursery PM - 92.7%
Lime - 96.6%	Cypress - 83.6%
Poplar - 95.1%	Acacia - 92.2%
Bay - 94.1%	Palm - 92.6%
H/Chestnut - 94.2%	Holly - 92.5%
Bamboo - 91.4%	Myrtle - 94.6%
Box - 95.4%	Eucalyptus - 90.3%
Ash - 83.5%	Willow - 97.3%

Green=met the minimum attendance rate

Year 2 had a visit from the
Pearly Queen of Greenwich



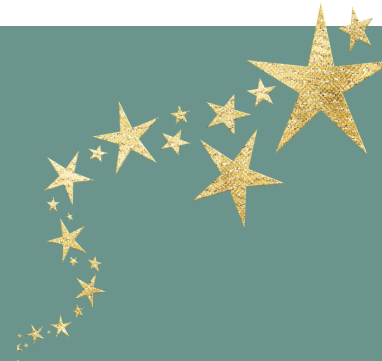
Congratulations!
We hope you enjoyed your
well deserved Hot
Chocolate!





WELL DONE!

Class	Pearsewood Champion
Nursery AM/PM	Garwin/Yunus
Lime	Crystal
Poplar	Skyla
H/Chestnut	Albie
Bay	Mandira
Bamboo	Amber
Box	John
Cypress	Joshua
Ash	Aisha
Acacia	Jensen
Palm	Alex
Holly	Millie
Myrtle	Sophie
Willow	Reece
Eucalyptus	Amelia R



SCHOOL VALUES

The value this term is Kindness.

The focus value for this term is Kindness

EYFS have been practising for their nativity next week. They are being kind and helping each other remember the words for the songs.

KS1 - Year 2 really enjoyed sharing their learning with the visitors on Wednesday. They kindly showed them the work they were doing on maps using their iPad.

KS2 - Year 5 have been working on writing persuasive letters using the knowledge they got from their trip to the Maritime Museum. They are showing kindness helping each other remember what they learnt on the trip.



This updated online safety guide examines Snapchat's latest features, including AI tools, Snap Map, and subscription content, and the potential risks they pose to young users.

Under 13



13 +



16



18



At The National College, our WakeUpWednesday guides empower and equip parents, carers and educators with the confidence and practical skills to be able to have informed and age-appropriate conversations with children about online safety, mental health and wellbeing, and climate change. Formerly delivered by National Online Safety, these guides now address wider topics and themes. For further guides, hints and tips, please visit nationalcollege.com.

What Parents & Educators Need to Know about SNAPCHAT

SNAP STREAK 97

WHAT ARE THE RISKS?

With over 900 million active monthly users and billions of 'Snaps' sent each month, Snapchat is a popular messaging app among children and young people. It allows users to share fun, spontaneous pictures and videos with friends and family while using playful filters. One of Snapchat's unique features is that pictures, videos and messages are only viewable for a short period of time.

ARTIFICIAL INTELLIGENCE

Snapchat's use of artificial intelligence (AI) includes features like the 'My AI' chatbot and AI-powered filters, offering interactive experiences that can be fun but also pose risks. These tools may share unfiltered or inaccurate responses, promote unrealistic beauty standards, and collect personal data. Advanced filters and deepfake-style lenses can distort reality, potentially leading to manipulation, impersonation, or inappropriate content.

SCREEN ADDICTION

Snapchat boosts user engagement and daily use with features like streaks (daily Snapchat exchanges between you and a friend). When a streak's been going for a few days, users will see a 🌟 emoji. The number alongside it shows the number of days, but if users miss a day and break the streak, the only way to restore it is to pay. This encourages daily use habits, and frequent notifications can keep users returning to the app even more often.

SEXTORTION

Because Snapchat's disappearing messages feature may foster a sense of safety, users may become targets of sextortion. For example, a predator may pressure someone into sending nude images, then somehow capture those images to threaten and intimidate the victim. This might involve claiming they will share the images with friends or family unless money is paid.

SNAPCHAT+

Snapchat+ is the platform's premium subscription service, offering early access to new and exclusive features. In June 2025, Snapchat introduced a new tier called *Serve*, giving subscribers access to hundreds of lenses and AR experiences for playing, creating, and sharing Snaps. These paid features may encourage young users to spend money to access exclusive content, increasing the risk of overspending or feeling pressured to make in-app purchases.

ACCESSIBILITY

Snapchat is now accessible from a web browser, meaning children can use it on a laptop or tablet without downloading the app. This can make activity harder to monitor, reduce the effectiveness of parental controls, and increase the risk of unsupervised communication or exposure to inappropriate content.

INAPPROPRIATE CONTENT

Some content on Snapchat isn't suitable for children. The hashtags used to group content are determined by the poster, so even an innocent search term could still yield age-inappropriate results. The app's disappearing messages feature also makes it easy for young people to share explicit images on impulse – so sexting continues to be a risk associated with Snapchat.

Advice for Parents & Educators

ACCESS THE SNAPCHAT FAMILY SAFETY HUB

Created with guidance from Common Sense Media, Snapchat has developed a Family Safety Hub that explains how the app works and how to use its in-app protections for teens. It's recommended that you review this guidance before allowing a child to download Snapchat. Remember, the app is only intended for children aged 13 and over.

ENCOURAGE OPEN DISCUSSIONS

Snapchat's risks can be easier to handle if you nurture an open dialogue. Talk about scams and blackmail before letting children sign up. If they're lured into a scam, encourage them to tell you immediately. Talk openly and non-judgementally about sexting, emphasising its inherent risks. Furthermore, explain how popular 'challenges' on the platform can have harmful consequences.

BLOCK AND REPORT

If a stranger connects with a child on Snapchat and makes them feel uncomfortable by pressuring them to send or receive unwanted or inappropriate images, the child can tap the three dots on that person's profile to report or block them. There are options to state why they're reporting that user, with a tailored reporting section under the 'Nudity and Sexual Content' category. In this category, there's the option to report somebody for threatening to leak sexually explicit images, or 'nudes'.

USE PRIVACY SETTINGS TOGETHER

Sit down with the children in your care and explore Snapchat's privacy settings as a shared activity. You can help them adjust who can contact them, view their stories, or see their location on Snap Map. It's a good opportunity to explain why some settings are safer than others, reinforcing their understanding of online boundaries. Encourage them to regularly review these settings, especially after app updates or changes in their friendship groups.

Meet Our Expert

Dr Claire Sutherland is an online safety consultant, educator and researcher who has developed and implemented anti-bullying and cyber safety policies for schools. She has written various academic papers and carried out research for the Australian Government comparing internet use and sexting behaviour of young people in the UK, USA and Australia.

#WakeUpWednesday

The National College

Source: See full reference list on guide page at: <https://nationalcollege.com/guides/snapchat>

[@wake_up_weds](https://www.wake_up_weds.com) [/www.thenationalcollege](https://www.thenationalcollege.com) [@wake.up.wednesday](https://www.wake_up_weds.com) [@wake.up.weds](https://www.wake_up_weds.com)

Users of this guide do so at their own discretion. No liability is entered into. Current as of the date of release: 17.09.2025